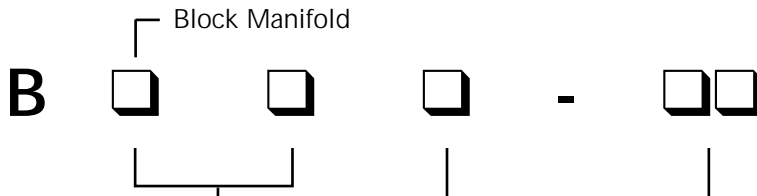




# MANIFOLDS

**B**□□□-□□



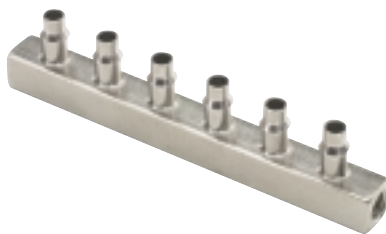
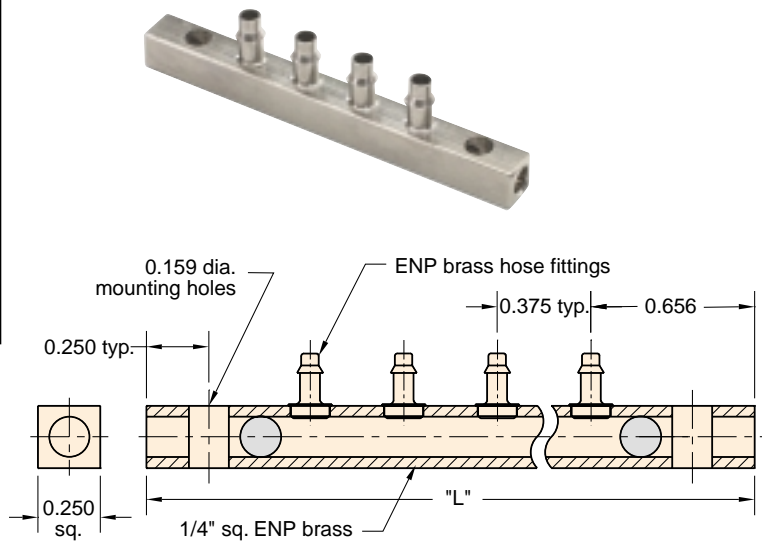
**HH** - Mounting Hole Both Ends  
**TT** - #10-32 Thread Port Both Ends

2 - 1/16" Barb  
 4 - 1/8" Barb

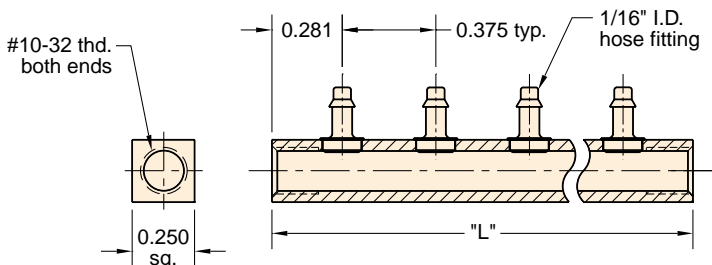
**# of Barbs**  
 04, 06, 08, 10, 12

Part #	# of Stations	Fitting Size
BHH2-04	4	1/16" I.D. Hose Barb
BHH2-06	6	
BHH2-08	8	
BHH2-10	10	
BHH2-12	12	
BHH4-04	4	1/8" I.D. Hose Barb
BHH4-06	6	
BHH4-08	8	
BHH4-10	10	
BHH4-12	12	

The BHH series has mounting holes for #6 screws at each end. One of the stations must be used as the air supply to the manifold.



Part #	# of Stations	Fitting Size
BTT2-04	4	1/16" I.D. Hose Barb
BTT2-06	6	
BTT2-08	8	
BTT2-10	10	
BTT2-12	12	
BTT4-04	4	1/8" I.D. Hose Barb
BTT4-06	6	
BTT4-08	8	
BTT4-10	10	
BTT4-12	12	



The BTT series has #10-32 holes at each end for inline mounting. One end may be used as the air supply to the manifold and the other end plugged.